



**GLOBAL POSITIONING SYSTEM (GPS)
PERFORMANCE**

OCTOBER TO DECEMBER 2020

QUARTERLY REPORT 4

	Name – Responsibility	Date	Signature
Prepared by	L Banfield (GMV NSL)	13/01/21	
Checked by	M Pattinson (GMV NSL)	13/01/21	
Authorised by	M Pattinson (GMV NSL)	13/01/21	

Total Pages: 33

Change Record

Issue / Rev.	Date	§ : Change Record	Authors
1.A	13/01/21	First version delivered to OSi for review and comment	L Banfield, M Pattinson

Table of Contents

1	INTRODUCTION	6
1.1	Purpose of Document	6
1.2	Document Overview	6
1.3	References	7
1.3.1	Applicable Documents	7
1.3.2	Reference Documents	7
1.4	Acronyms	7
2	INTRODUCTION	9
2.1	Purpose	9
2.2	Performance Specification and Definitions	9
2.3	Methodology	13
2.4	Assumptions	16
3	SPS PERFORMANCE	18
3.1	Baseline 24-Slot Constellation	18
3.2	SPS SIS Accuracy	18
3.3	SPS SIS Integrity	21
3.4	SPS SIS Continuity	21
3.5	SPS SIS Availability	21
3.6	PDOP Availability	22
3.7	Position Service Availability	24
3.8	Positioning Accuracy	25
4	NANU ANALYSIS	28
5	CONCLUSIONS	31

List of Figures

Figure 2-1: Location of Performance Monitoring Stations.....	14
Figure 3-1: Constellation URE (95%) for Reporting Period.....	19
Figure 3-2: Constellation RMS URE for Reporting Period	19
Figure 3-3: Daily PDOP Availability in the Reporting Period.....	23
Figure 3-4: Daily Maximum PDOP Value in the Reporting Period.....	23
Figure 3-5: Daily Horizontal Service Availability Values for Reporting Period	24
Figure 3-6: Daily Vertical Service Availability Values for Reporting Period.....	25
Figure 3-7: Daily Horizontal Position Accuracy (95%) for Reporting Period	26
Figure 3-8: Daily Vertical Position Accuracy (95%) for Reporting Period	26
Figure 3-9: Daily Horizontal Position Accuracy (99.99%) for Reporting Period	27
Figure 3-10: Daily Vertical Position Accuracy (99.99%) for Reporting Period	27

List of Tables

Table	1-1:	Applicable	Documents					
7								
Table	1-2:	Reference	Documents					
7								
Table	1-3 :	Acronyms	and	Abbreviations				
8								
Table	2-1:	SPS	Criteria	and	Specifications			
12								
Table 3-2:	Baseline constellation in the Period 1 October to 31 December 2020							
18								
Table	3-3:	Range	Error	Statistics	for	Reporting	Period	
20								
Table	4-1:	Summary	of	Forecast	Scheduled	Outages		
28								
Table	4-2:	Summary	of	Actual	Scheduled	Outages		
29								
Table	4-3:	Summary	of	Cancelled	Outages			
29								
Table	4-4:	Summary	of	Forecast	and	Actual	Unscheduled	Outages
29								
Table	4-5:	Summary	of	NANU	Statistics	for	Monitoring	Period
29								
Table	5-1:	Summary	of	Performance				
32								

1 INTRODUCTION

1.1 Purpose of Document

This document presents the results of the GPS SPS performance assessment for the period of October 2020 to December 2020. The objectives of the performance assessment are to compare the measured performance against US DoD SPS performance specification [RD.1], covering the following parameters:

- SPS SiS Accuracy,
- SPS SiS Integrity,
- SPS SiS Continuity,
- SPS SiS Availability,
- PDOP Availability,
- SPS Position Service Availability and
- SPS Position Service Accuracy.

It also includes NANU analysis and geomagnetic activity.

The performance is analysed according to [AD.1] and [AD.2] using raw data recorded at the OSi site MLG1.

1.2 Document Overview

This document is arranged in the following sections:

- **Section 1**, the current section, describes the purpose, scope and structure of the document and lists the reference documents.
- **Section 2** gives an introduction to the activity, including performance specification and assessment methodology and assumptions;
- **Section 3** contains an assessment of performance against GPS SPS performance standards;
- **Section 4** provides an analysis of the NANUs;
- **Section 5** contains the conclusions.

1.3 References

1.3.1 Applicable Documents

Ref.	Document title	Document reference	Issue	Date
AD.1	Agreement relating to the provision of services pursuant to request for tenders for the provision of GNSS monitoring services	-	-	25/06/19
AD.2				

Table 1-1: Applicable Documents

1.3.2 Reference Documents

Ref.	Document title	Document reference	Issue	Date
RD.1	Global Positioning System Standard Positioning Service Performance Standard	GPS SPS	5 th Edition	Apr 2020
RD.2	Global Positioning System (GPS) Civil Monitoring Performance Specification	DOT-VNTSC-FAA-09-08	-	April 30 th 2009
RD.3	Reference Set of Parameters for RAIM Availability Simulations', EUROCAE WG-62	-	-	8-9 July 2003

Table 1-2: Reference Documents

1.4 Acronyms

Acronym	Organisation
AOD	Age Of Data
GNSS	Global Navigation Satellite System
GPS	Global Positioning System
HDOP	Horizontal Dilution Of Precision
IAA	Irish Aviation Authority
IGS	International GNSS Service
NANU	Notice Advisory to Navstar Users
NOTAM	Notice To Airmen
OSi	Ordnance Survey Ireland

Acronym	Organisation
PDOP	Position Dilution Of Precision
RAIM	Receiver Autonomous Integrity Monitoring
SIS	Signal In Space
SPS	Standard Positioning Service
TTA	Time To Alarm
UERE	User Equivalent Range Error
URA	User Range Accuracy
URE	User Range Error
VDOP	Vertical Dilution Of Precision

Table 1-3 : Acronyms and Abbreviations

2 INTRODUCTION

2.1 Purpose

The purpose of the performance monitoring activity is to collect and analyse data on the performance of the GPS Signal in Space (SIS) [AD.1]. For this report, the applicable requirements are defined in the Global Positioning System Standard Positioning Service Performance Standard (GPS SPS PS), approved by the US Department of Defence [RD.1].

2.2 Performance Specification and Definitions

It is noted that the GPS performance specification [RD.1] was updated during this year (in April 2020) and some of the performance criteria and specification have changed since the previous version. This version of the performance report (for Q3 2020) uses the new specification values from the updated version of [RD.1], which means there are some differences to previous performance reports.

The applicable performance specifications for the Standard Positioning Service [RD. 1] are as follows, with changes to the previous version of the GPS performance spec noted:

Criteria	Specifications
SPS SIS Accuracy	<p>The User Range Error (URE) for any healthy satellite for Single-Frequency C/A-Code:</p> <ul style="list-style-type: none"> • ≤ 7.0 m 95% Global Average URE during Normal Operations over all age of data (AODs) [previous value was 7.8m] • ≤ 3.8m 95% Global Average URE during Normal Operations at Zero AOD [previous value was 6.0m] • ≤ 9.7 m 95% Global Average URE during Normal Operations at Any AOD [previous value was 12.8m] <ul style="list-style-type: none"> • ≤ 30 m 99.94% Global Average URE during Normal Operations over one-year period • ≤ 30 m 99.79% Worst Case Single Point Average URE during Normal Operations over one-year period • ≤ 388 m 95% Global Average URE during Extended Operations after 14 Days without Upload. <p>The User Range Error (URE) for all healthy satellites for Single-Frequency C/A-Code:</p> <ul style="list-style-type: none"> • ≤ 2.0 m 95% Global Average URE during Normal Operations over all age of data (AODs) [New specification – did not appear previously]

Criteria	Specifications
	<p>The User Range Rate Error (URRE) for Single-Frequency C/A-Code:</p> <p>≤0.006 m/sec 95% Global Average URRE over any 3-second interval during Normal Operations at Any AOD</p> <p>The User Range Acceleration Error (URAE) for Single-Frequency C/A-Code:</p> <p>≤0.002 m/sec/sec 95% Global Average URAE over any 3-second interval during Normal Operations at Any AOD</p> <p>The UTC Offset Error for Single-Frequency C/A-Code:</p> <p>≤30 nsec 95% Global Average UTCOE during Normal Operations at Any AOD <i>[previous value was 40nsec]</i></p>
SPS SIS Integrity	<p>The SIS Instantaneous URE Integrity for Single-Frequency C/A-Code:</p> <ul style="list-style-type: none"> • ≤1x10⁻⁵ Probability Over Any Hour of the SPS SIS Instantaneous URE Exceeding the NTE Tolerance Without a Timely Alert during Normal Operations <p>The SIS Instantaneous UTCOE Integrity for Single-Frequency C/A-Code:</p> <ul style="list-style-type: none"> • ≤1x10⁻⁵ Probability Over Any Hour of the SPS SIS Instantaneous UTCOE Exceeding the NTE Tolerance Without a Timely Alert during Normal Operations <p>The SIS Instantaneous Psat and Pconst for Single-Frequency C/A-Code:</p> <ul style="list-style-type: none"> • ≤1x10⁻⁵ Fraction of Time when the SPS SIS Instantaneous URE Exceeds the NTE Tolerance Without a Timely Alert (Psat) <i>[New specification – did not appear previously]</i> • ≤1x10⁻⁸ Fraction of Time when the SPS SIS Instantaneous URE from two or more satellites Exceeds the NTE Tolerance due to a common cause Without a Timely Alert (Pconst) <i>[New specification – did not appear previously]</i>
SPS SIS Continuity	<p>SPS SIS Unscheduled Failure Interruption Continuity</p> <ul style="list-style-type: none"> • ≥ 0.9998 Probability Over Any Hour of Not Losing the SPS SIS Availability from a Slot Due to Unscheduled Interruption • Given that the SPS SIS is available from the slot at the start of the hour
Status and Problem reporting	<p>Scheduled Event Affecting Service</p> <ul style="list-style-type: none"> • Appropriate NANU issued to the Coast Guard and the FAA at least 48 hours prior to the event for 95% of the events <i>[previously did not specify a %]</i>

Criteria	Specifications
SPS SIS Availability	<p>SPS SIS Per-Slot Availability</p> <ul style="list-style-type: none"> • ≥ 0.957 Probability that a Slot in the Baseline 24-Slot Configuration will be Occupied by a Satellite Broadcasting a Healthy SPS SIS • ≥ 0.957 Probability that a Slot in the Expanded Configuration will be Occupied by a Pair of Satellites Each Broadcasting a Healthy SPS SIS <p>SPS SIS Constellation Availability</p> <ul style="list-style-type: none"> • ≥ 0.98 Probability that at least 21 Slots out of the 24 Slots will be Occupied Either by a Satellite Broadcasting a Healthy SPS SIS in the Baseline 24-Slot Configuration or by a Pair of Satellites Each Broadcasting a Healthy SPS SIS in the Expanded Slot Configuration • ≥ 0.99999 Probability that at least 20 Slots out of the 24 Slots will be occupied either by a Satellite Broadcasting a Healthy SPS SIS in the Baseline 24-Slot Configuration or by a Pair of Satellites Each Broadcasting a Healthy SPS SIS in the Expanded Slot Configuration. • ≥ 0.95 Probability that the Constellation will have at least 24 Operational Satellites regardless of Whether Those Operational Satellites are Located in Slots or Not.
PDOP Availability	<ul style="list-style-type: none"> • $\geq 98\%$ global Position Dilution of Precision (PDOP) of 6 or less • $\geq 88\%$ worst site PDOP of 6 or less
SPS Position Service Availability	<ul style="list-style-type: none"> • $\geq 99\%$ Horizontal Service Availability average location • $\geq 90\%$ Horizontal Service Availability worst-case location • $\geq 99\%$ Vertical Service Availability average location • $\geq 90\%$ Vertical Service Availability worst-case location <p>With 15 m horizontal and 33 m vertical (SIS only) 95% threshold over 24hours <i>[previous values were 17m and 37m]</i></p>
Positioning Accuracy	<ul style="list-style-type: none"> • ≤ 8 meters 95% Global Average Horizontal Error <i>[previous value was 9m]</i> • ≤ 15 meters 95% worst site Horizontal Error <i>[previous value was 17m]</i> • ≤ 13 meters 95% Global Average Vertical Error <i>[previous value was 15m]</i> • ≤ 33 meters 95% worst site Vertical Error <i>[previous value was 37m]</i> • Global Average Velocity Accuracy

Criteria	Specifications
	<ul style="list-style-type: none"> • ≤ 0.2 m/sec 95% velocity error, any axis [New specification – did not appear previously] • ≤ 30 nanoseconds time transfer error 95% of time for Time Transfer Domain Accuracy [previous value was 40nsec]

Table 2-1: SPS Criteria and Specifications

The definitions for each of the criteria and the methodology used for assessment are given below. As well as the GPS SPS [RD.1], the GPS civil monitoring performance specification [RD.2] has also been used to help define the methodology for the assessment.

SPS SIS Accuracy

The SPS SIS accuracy is described in two statistical ways; one way is as the 95th percentile (95%) SPS SIS user range error (URE) at a specified age of data (AOD), the other is as the 95% SPS SIS URE over all AODs. With either statistical expression, the SPS SIS accuracy is also known as the SPS SIS pseudorange accuracy. In this context, “pseudorange” means the full pseudorange data set (i.e., the matched combination of a corrected pseudorange measurement and a pseudorange origin, or equivalently the matched combination of a raw pseudorange measurement and the associated NAV data).

Other accuracy-related SPS SIS performance parameters include the SPS SIS pseudorange rate (velocity) accuracy defined as the 95% SPS SIS pseudorange rate error over all AODs and the SPS SIS pseudorange acceleration (rate rate) accuracy defined as the 95% SPS SIS pseudorange acceleration error over all AODs. These values are not monitored as part of this performance monitoring contract.

SPS SIS Integrity

The SPS SIS integrity is defined as the trust which can be placed in the correctness of the information provided by the SPS SIS. SPS SIS integrity includes the ability of the SPS SIS to provide timely alerts to receivers when the SPS SIS should not be used for positioning or timing. The SPS SIS should not be used when it is providing misleading signal-in-space information (MSI), where the threshold for “misleading” is a not-to-exceed (NTE) tolerance on the SIS URE. For this SPS PS, the four components of integrity are the probability of a major service failure, the time to alert, the SIS URE NTE tolerance, and the alert (either one or the other of two types of alerts).

- **Probability of a Major Service Failure.** The probability of a major service failure for the SPS SIS is defined to be the probability that the SPS SIS instantaneous URE exceeds the SIS URE NTE tolerance (i.e., MSI) without a timely alert being issued (i.e., unalerted MSI [UMSI]). Alerts generically include both alarms and warnings.
- **Time to Alert.** The time to alert (TTA) for the SPS SIS is defined to be the time from the onset of MSI until an alert (alarm or warning) indication arrives at the receiver's antenna. Real-time alert information broadcast as part of the NAV message data is defined to arrive at the receiver's antenna at the end of the NAV message subframe which contains that particular piece of real-time alert information.
- **SIS URE NTE Tolerance.** The SPS SIS URE NTE tolerance for a healthy SPS SIS is defined to be 4.42 times the upper bound on the URA value corresponding to the URA index "N" currently broadcast by the satellite. The SIS URE NTE tolerance for a

marginal SPS SIS is not defined and there is no SIS URE NTE tolerance for an unhealthy SPS SIS.

SPS SIS Continuity

The SPS SIS continuity for a healthy SPS SIS is the probability that the SPS SIS will continue to be healthy without unscheduled interruption over a specified time interval. Scheduled interruptions which are announced at least 48 hours in advance do not contribute to a loss of continuity. Scheduled SPS SIS interruptions are announced by way of the Control Segment issuing a "Notice Advisory to Navstar Users" (NANU). NANUs are similar to the "Notices to Airmen" (NOTAMs) issued regarding scheduled interruptions of ground-based air navigation aids. OCS internal procedures are to issue NANUs for scheduled interruptions at least 96 hours in advance.

SPS SIS Availability

The SPS SIS availability is the probability that the slots in the GPS constellation will be occupied by satellites transmitting a trackable and healthy SPS SIS. For this SPS Performance Standard, there are two components of availability as follows:

- Per-Slot Availability. The fraction of time that a slot in the GPS constellation will be occupied by a satellite that is transmitting a trackable and healthy SPS SIS.
- Constellation Availability. The fraction of time that a specified number of slots in the GPS constellation

PDOP Availability

PDOP availability is defined as the percentage of time over a specified time interval that the predicted PDOP is less than a specified value for any point within the service volume [RD.1].

Position Service Availability

Position service availability is defined as the percentage of time over a specified time interval that the position accuracy is less than a specified value for any point within the service volume [RD.1].

Positioning Service Accuracy

Position service accuracy is defined as the statistical difference between position measurements and a surveyed benchmark for any point within the service volume over a specified time interval [RD.1].

2.3 Methodology

For the performance analysis in this report, raw GPS measurement data from reference stations has been analysed.

The primary source of data is the OSi network of active stations in Ireland. OSi operates a national network of GNSS receiver stations. The network consists of 25 receivers that provide 24-hour availability of dual frequency GPS and GLONASS data. For the purposes of this performance monitoring activity, OSi provides raw data for 2 of these sites to GMV NSL for processing and analysis. The sites that are used are Mullingar (MLG1) and Sligo Hospital (SLGO). The locations of these sites are shown in Figure 2-1.

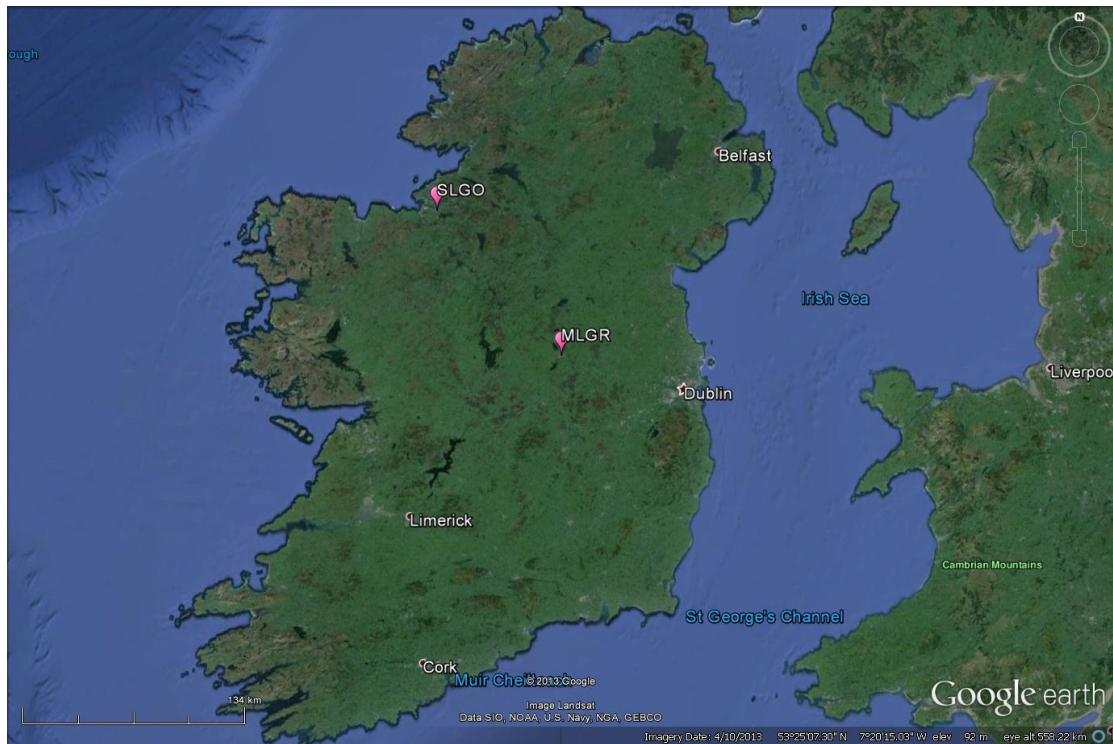


Figure 2-1: Location of Performance Monitoring Stations

In this report, MLG1 is used as the main site to provide performance monitoring across the whole of Irish airspace and SLGO is a back-up in case of problems with MLG1 and to allow cross-checking of performance in the case of anomaly investigations. These sites have been chosen to fulfil the following criteria:

- Centrally located within Ireland in order to ensure monitoring of complete airspace;
- Good data availability and continuity (i.e. avoid sites with historically poor data availability);
- Good measurement quality (i.e. avoid sites with known interference, multipath or sky visibility issues);
- Availability of required observation types and data.

In case there are problems with the data access simultaneously from both MLG1 and SLGO, data from the EGNOS RIMS station at Cork will be used. The raw observation data is made available through the EGNOS Data Access Server (EDAS) in real-time or via an ftp archive. In addition to the raw data, NANU information is downloaded from the US Coast Guard Navigation Centre website (<http://www.navcen.uscg.gov/?pageName=gpsNanuInfo>). This provides information on the NANUs for scheduled and unscheduled outages during the monitoring period.

The methods for assessing of each of the requirements are described below.

SPS SIS Accuracy

SIS accuracy is assessed through processing and analysis of the raw measurement data. In order to compute the SIS accuracy, the measurements recorded at the GPS receiver are used to compute the instantaneous SIS errors. This is done by computing the difference between computed ranges (based on known receiver location and satellite position) and the corrected measurement, which has satellite and receiver clock biases, group delay, ionospheric and tropospheric errors removed. Once the SIS range errors for every satellite measurement on every epoch have been computed, the per-satellite and whole constellation statistics across the whole period, as well as daily statistics for all satellites combined, are generated.

SPS SIS Integrity

SIS accuracy is assessed through processing and analysis of the raw measurement data. The SIS integrity is assessed by comparing each instantaneous computed SIS error value with a threshold value of $4.42 \times$ broadcast URA. The number of occasions where the instantaneous URE exceeds the threshold are counted and checked against the expected number of failures.

SPS SIS Continuity

SIS continuity is assessed through analysis of the broadcast navigation messages and the NANU archive. Firstly, the daily broadcast navigation messages are scanned in order to find the time periods for any satellites that do not have healthy navigation messages. These satellites and time periods are then matched against NANU information to see if the outages are scheduled or unscheduled.

The SIS continuity is computed for the baseline 24-slot constellation and is an average value over all slots. The total time that any satellites in the baseline constellation were unhealthy due to an unscheduled outage is divided by the total time in the analysis period and expressed as a percentage. Results are presented for the reporting period and, when available, for the previous year.

SPS SIS Availability

SIS availability is assessed through analysis of the broadcast navigation messages and the NANU archive. Firstly, the daily broadcast navigation messages are scanned in order to find the time periods for any satellites that do not have healthy navigation messages. These satellites and time periods are then matched against NANU information to see if the outages are scheduled or unscheduled.

The SIS availability is computed for the baseline 24-slot constellation as well as for the whole constellation and is an average value over all slots. At each epoch the number of healthy satellites (both in the baseline 24-slot constellation and in total) is counted. Then the following parameters are computed:

- Total time that there are less than 21 healthy satellites in the baseline constellation;
- Total time that there are less than 20 healthy satellites in the baseline constellation;
- Total time that there are less than 24 healthy satellites in the whole constellation.

These parameters are then divided by total time of the analysis and expressed as percentage values. Results are presented for the reporting period and, when available, for the previous year.

It should be noted that in case the baseline 24-slot constellation does not meet requirements, the analysis will be expanded to include pairs of satellites in the expanded slot constellation.

PDOP Availability

PDOP availability is assessed through processing and analysis of the raw measurement data. The PDOP availability is assessed by computing the PDOP for all satellites in view above 5 degrees at the GPS receiver at every epoch (1Hz rate). Each PDOP value is checked against the threshold value of 6 and any failures are counted. The numbers of failures on each day are then used to generate the daily availability value. A separate availability value for each day is computed.

Position Service Availability

Position service availability is assessed through processing and analysis of the raw measurement data. The derivation of the position service availability requirements of 15m (95% horizontal accuracy) and 33m (95% vertical accuracy) for 99% of the time are explained a bit more in section B.3.2 of the GPS SPS [RD.1]. The requirement is based on fulfilling a 1-sigma UERE of 3.6m, HDOP of 2.1 and VDOP of 4.53. To check this requirement, the following approach is used:

- For each day, compute daily rms SIS error for all satellites combined. This is equivalent to the 1-sigma UERE in the description above;
- On each epoch, multiply daily rms SIS error by HDOP value to compute estimated horizontal accuracy due to SIS error;
- For each epoch, multiply daily rms SIS error by VDOP value to compute estimated vertical accuracy due to SIS error;
- Compute daily availability (%) of estimated horizontal accuracy < 7.5m (1-sigma);
- Compute daily availability (%) of estimated vertical accuracy < 16.5m (1-sigma).
- If daily availability of horizontal accuracy greater than the required threshold, the requirement for horizontal service accuracy is passed;
- If daily availability of vertical accuracy greater than the required threshold, the requirement for vertical service accuracy is passed.

Positioning Service Accuracy

In order to check the position service accuracy, the raw measurements recorded at the GPS receiver are used to compute a user position solution on every epoch (1Hz). The computed positions are then compared against the known position of the receiver in order to generate horizontal and vertical position errors. Statistics for 95% error value, 99.99% error value etc. are then computed separately for each day and checked against the thresholds.

2.4 Assumptions

For processing the raw data and generating the results the following assumptions are made:

- Single frequency (L1) processing with C/A code;
- 5-degree elevation mask used;
- Broadcast iono model (Klobuchar) used to remove ionospheric errors;
- RTCA trop model used to remove tropospheric errors;
- Weighted least squares RAIM algorithm used for RAIM prediction (protection level computation) and Fault Detection;
- Probability of missed detection = 0.001 and Probability of false alarm = 1×10^{-5} for RAIM computations;
- UERE budget (non-SIS components) used in position solution and for RAIM

predictions are given below [RD.4]:

Elevation, degrees	Error, metres
5	7.48
10	6.64
15	5.92
20	5.31
30	4.31
40	3.57
50	3.06
60	2.73
90	2.44

- The URA value from the broadcast navigation message is combined with the values in the table to form the total UERE for the observations.

As the actual monitoring is based on the measurements from one receiver the following points should be noted:

- Performance monitoring is local to the monitoring station with a coverage area defined by the correlation of the major error sources and the configuration of the constellation;
- The range domain errors contain the residuals of other error sources other than the SIS range errors; hence, the performance statistics generated are conservative.

3 SPS PERFORMANCE

3.1 Baseline 24-Slot Constellation

The SPS SIS performance standard is largely based on the GPS baseline 24-slot constellation, which consists of 24 slots in six orbital planes with four slots per plane. Some of these slots are expanded, whereby two satellites occupy fore and aft positions at that slot, in which case the slot is occupied as long as at least one of the expanded slots is occupied by an operational satellite. It is important to identify the baseline constellation (and expanded slots) to act as reference to subsequent data processing and analysis. The following tables show the satellite PRN in each slot for the baseline constellation for the period October to December 2020¹.

Slot	A1	A2	A3	A4	B1/B5	B2	B3	B4	C1	C2	C3	C4
PRN	24	31	30	7	16/26	25	28	12	29	27	8	17
Slot	D1	D2/D5	D3	D4	E1	E2	E3	E4	F1	F2/F5	F3	F4
PRN	2	1/11	18	6	3	10	5	20	32	15/13	9	4

Table 3-1: Baseline constellation in the Period 1 October to 31 December 2020

Note that in the latest version of the GPS SPS performance spec [RD.1] there are additional expandable slots defined for A2, C4 and F3 but these are not currently used.

3.2 SPS SIS Accuracy

In addition to the specifications in Table 2-1, the Conditions and Constraints for SPS SIS URE Accuracy specification [RD.1] are:

- For any healthy SPS SIS
- Neglecting single-frequency ionospheric delay model errors
- Including group delay time correction (TGD) errors at L1
- Including inter-signal bias (P(Y)-code to C/A-code) errors at L1

The statistics presented here are based on the same sample rate for positioning (1Hz). It should be noted that the computed range errors (in addition to SIS errors) contain residual errors local to the monitoring antenna (multipath, tropospheric and ionospheric). The URE Accuracy (95th percentile) values of each satellite for the period October to December 2020 are shown in the next figure.

¹ The information on slots is taken from the figure at <https://www.navcen.uscg.gov/pdf/gps/current.pdf>. It is noted that there is some inconsistency between this figure and the slot numbers in the ops advisory messages. In addition, the latest GPS III satellites (SVN76/PRN13 and SVN77/PRN14) are not shown in the navcen figure.

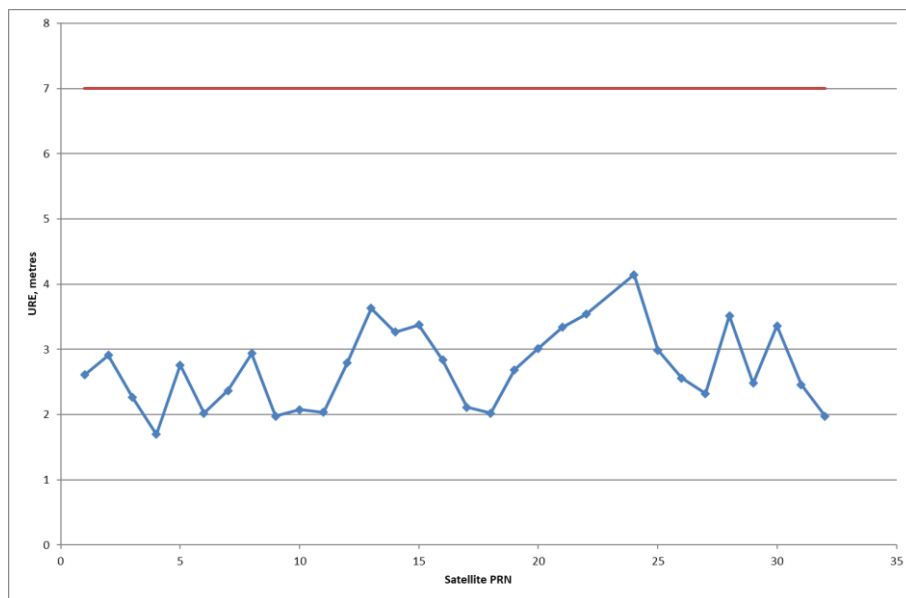


Figure 3-1: Constellation URE (95%) for Reporting Period

It can be seen that the URE (95%) for all satellites is below the 7m threshold. The daily constellation RMS URE results in the period October to December 2020 and the 3.6m threshold are shown in the next figure. Note that ≤ 7 m 95% SPS SIS URE performance standard is equivalent to a ≤ 3.6 m RMS SPS SIS URE performance standard [RD.1]. This is also important for the position service availability assessment.

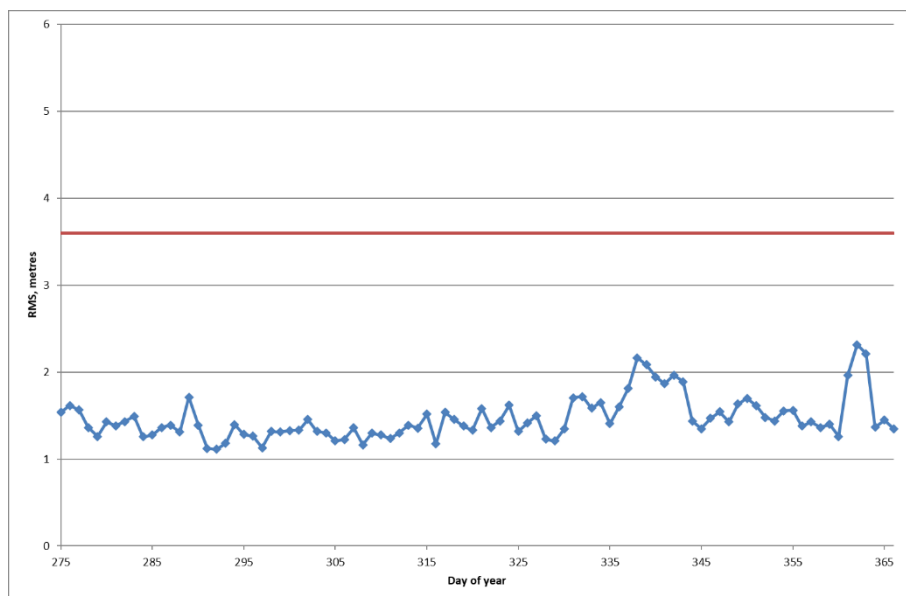


Figure 3-2: Constellation RMS URE for Reporting Period

It can be seen that the RMS values are below the threshold (3.6 metres) on all days. As well as the 95% and rms URE statistics, additional URE statistics are computed, including mean, 1-sigma and maximum values. Although not strictly required for the performance specification,

these values can be useful for anomaly investigation. The range error statistics (in metres) for the period October to December 2020 are given in the table below.

PRN	Range Error (mean)	Range Error (RMS)	1-sigma	Range Error (95%)	Range Error (max)	Number of Samples
1	0.48	1.37	1.28	2.61	6.55	2370118
2	1.15	1.60	1.11	2.91	4.72	2932561
3	0.29	1.17	1.13	2.26	4.43	2501786
4	0.04	0.88	0.88	1.70	4.31	2786755
5	0.61	1.33	1.19	2.76	5.22	2668653
6	-0.11	1.05	1.05	2.02	5.58	2754345
7	0.33	1.16	1.11	2.37	4.60	2795496
8	0.76	1.55	1.35	2.94	5.02	2544839
9	0.31	1.02	0.97	1.97	3.80	2602330
10	0.64	1.10	0.90	2.08	4.51	2897835
11	0.93	1.18	0.73	2.04	3.58	932159
12	0.75	1.52	1.32	2.80	6.55	2586045
13	1.02	1.77	1.45	3.63	6.05	2291037
14	-1.04	1.64	1.27	3.27	6.04	943032
15	0.74	1.60	1.42	3.37	5.57	2441371
16	1.36	1.75	1.10	2.84	5.18	2654986
17	0.37	1.08	1.02	2.11	5.72	2912364
18	0.66	1.12	0.91	2.02	3.83	2851056
19	1.22	1.51	0.89	2.69	5.45	2841411
20	1.43	1.74	1.00	3.02	5.36	2895323
21	2.05	2.24	0.90	3.34	5.50	2282134
22	1.90	2.22	1.16	3.54	6.44	2483137
23	0.53	1.07	0.93	2.10	4.19	2887144
24	0.93	2.04	1.81	4.15	8.14	2125581
25	1.33	1.77	1.17	2.99	5.52	2255165
26	1.10	1.54	1.08	2.56	4.15	2472960
27	1.18	1.45	0.84	2.32	4.13	2395091
28	1.03	1.72	1.38	3.52	7.27	2964944
29	1.05	1.45	1.00	2.48	4.05	2745264
30	1.04	1.71	1.36	3.36	8.60	2720352
31	0.52	1.32	1.22	2.46	4.20	2761862
32	0.48	1.03	0.92	1.98	4.24	2896130
Total	0.72	1.32	1.10	2.82	8.60	81193266

Table 3-2: Range Error Statistics for Reporting Period

Overall, the measured SIS accuracy for each individual satellite meets the requirements during this monitoring period.

The measured accuracy for all satellites combined is slightly above the threshold of 2m, although it should be noted that the specification does not include ionospheric errors whereas as the measurements used in the analysis will include residual iono errors and hence will be larger.

3.3 SPS SIS Integrity

In addition to the specifications in Table 2-1, the Conditions and Constraints for SPS SIS Integrity performance [RD.1] are:

- For any healthy SPS SIS;
- SPS SIS URE NTE tolerance defined to be ± 4.42 times the upper bound on the URA value corresponding to the URA index "N" currently broadcast by the satellite;
- Given that the maximum SPS SIS instantaneous URE did not exceed the NTE tolerance at the start of the hour;
- Worst case for delayed alert is 6 hours;
- Neglecting single-frequency ionospheric delay model errors.

Based on the requirement of 1×10^{-5} /hr probability for misleading information, 92-day period and a 31-satellite constellation, the maximum number of events expected is 0.66.

On every epoch throughout the monitoring period, the instantaneous measured URE for each satellite has been compared against a threshold of 4.42 times the upper value of the URA index. The number of URE values above the threshold has been recorded and is checked against the expected number.

From post-processing results, there are no events detected in this period. Therefore, this requirement is passed.

3.4 SPS SIS Continuity

In addition to the specifications in Table 2-1, the Conditions and Constraints for SPS SIS Continuity performance [RD.1] are:

- Calculated as an average over all slots in the 24-slot constellation, normalized annually;
- Given that the SPS SIS is available from the slot at the start of the hour.

During this reporting period there was one unscheduled event on the baseline constellation, lasting for 60.83 hours. This gives a continuity figure of 99.885% in this period, which does not meet the requirement of 99.98% in this period.

3.5 SPS SIS Availability

In addition to the specifications in Table 2-1, the Conditions and Constraints for SPS SIS Availability performance [RD.1] are:

- Calculated as an average over all slots in the 24-slot constellation, normalized annually;
- Applies to satellites broadcasting a healthy SPS SIS which also satisfy the other

performance standards in this SPS Performance Standard.

The total period (in this monitoring period) in which satellites from the baseline 24-satellite constellation broadcast an unhealthy SIS was 140.85 hours. This is equivalent to an average of 0.9973 over all slots in the 24-slot constellation and satisfies SPS SIS Per-slot Availability standard (≥ 0.957).

The minimum number of the baseline constellation satellites broadcasting healthy SPS SIS was 23, greater than the specifications of 20 and 21. Hence, performance during the monitoring period was measured at the 100% level, satisfying the Performance Standard as specified below.

- ≥ 0.98 Probability that at least 21 Slots out of the 24 Slots will be Occupied Either by a Satellite Broadcasting a Healthy SPS SIS in the Baseline 24-Slot Configuration or by a Pair of Satellites Each Broadcasting a Healthy SPS SIS in the Expanded Slot Configuration;
- ≥ 0.99999 Probability that at least 20 Slots out of the 24 Slots will be occupied either by a Satellite Broadcasting a Healthy SPS SIS in the Baseline 24-Slot Configuration or by a Pair of Satellites Each Broadcasting a Healthy SPS SIS in the Expanded Slot Configuration.

The minimum number of operational satellites broadcasting healthy messages in this reporting period was 29. This represents performance at the 100% level, satisfying the Performance Standard as specified below.

- ≥ 0.95 Probability that the Constellation has at least 24 operational satellites regardless of whether the operational satellites are located in the baseline slots.

3.6 PDOP Availability

In addition to the specifications in Table 2-1, the Conditions and Constraints for PDOP performance [RD.1] are:

- Defined for position solution meeting the representative user conditions and operating within the service volume over any 24-hour interval;
- Based on using only satellites transmitting standard code and indicating “healthy” in the broadcast navigation message.

The following plot shows the daily PDOP availability ($PDOP < 6$) calculated at the site for all healthy satellites above 5 degrees elevation during the period October to December 2020.

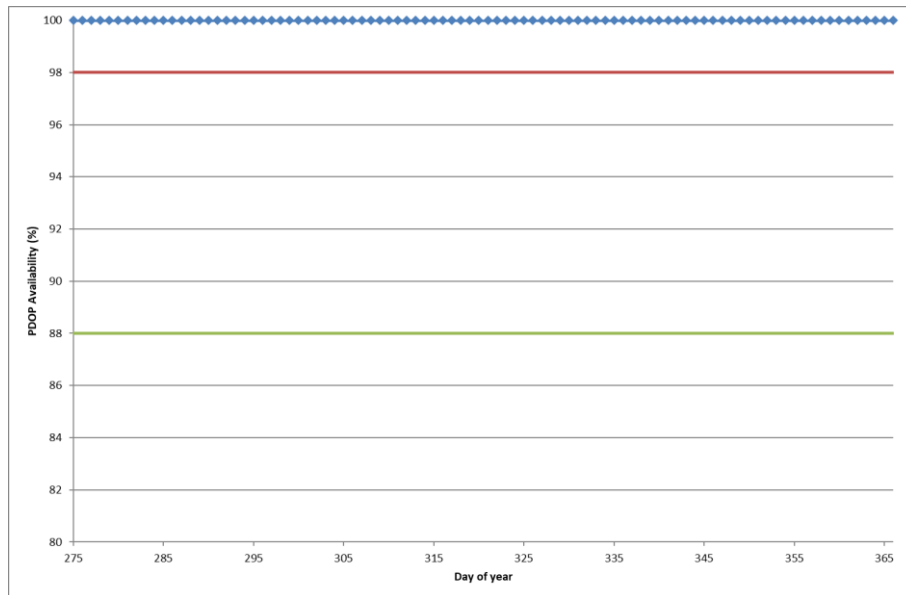


Figure 3-3: Daily PDOP Availability in the Reporting Period

It can be seen that the daily PDOP availability values are all above the thresholds of 98% (global average) and 88% (worst site). Therefore, the PDOP availability fulfils the requirements.

In addition, the daily mean and maximum PDOP values are displayed for the same period.

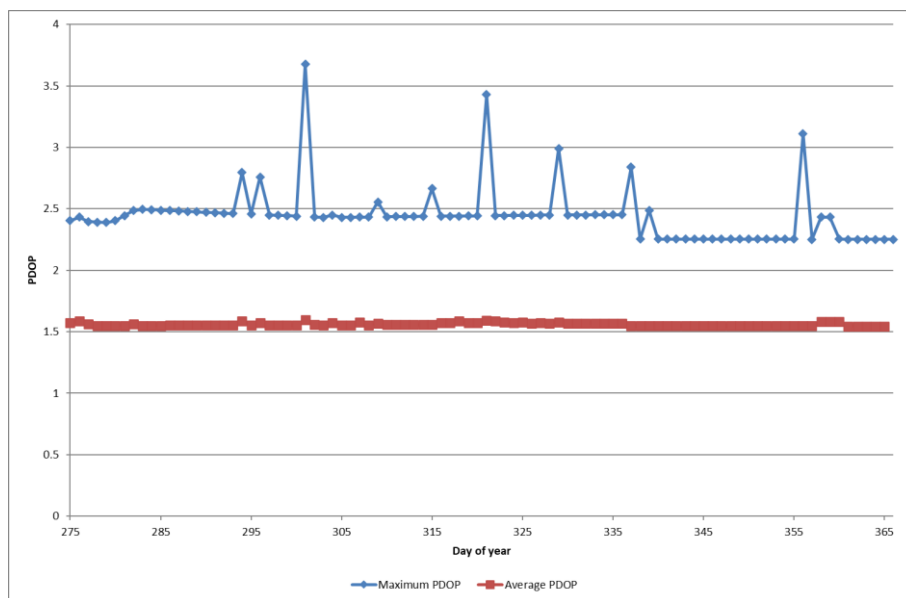


Figure 3-4: Daily Maximum PDOP Value in the Reporting Period

The daily PDOP values can be used to identify specific days that have different performance from the others. It can be seen that on all days the maximum PDOP is well below 6.

3.7 Position Service Availability

In addition to the specifications in Table 2-1, the Conditions and Constraints for Service Availability performance [RD.1] are:

- 15 meters horizontal (SIS only) 95% threshold;
- 33 meters vertical (SIS only) 95% threshold;
- Defined for position solution meeting representative user conditions and operating within the service volume over any 24-hour interval;
- Based on using only satellites transmitting standard code and indicating “healthy” in the broadcast navigation message.

The computation of these values is detailed in section 2.2.

The daily horizontal and vertical service availabilities for the period October to December 2020 are shown in the following figures.

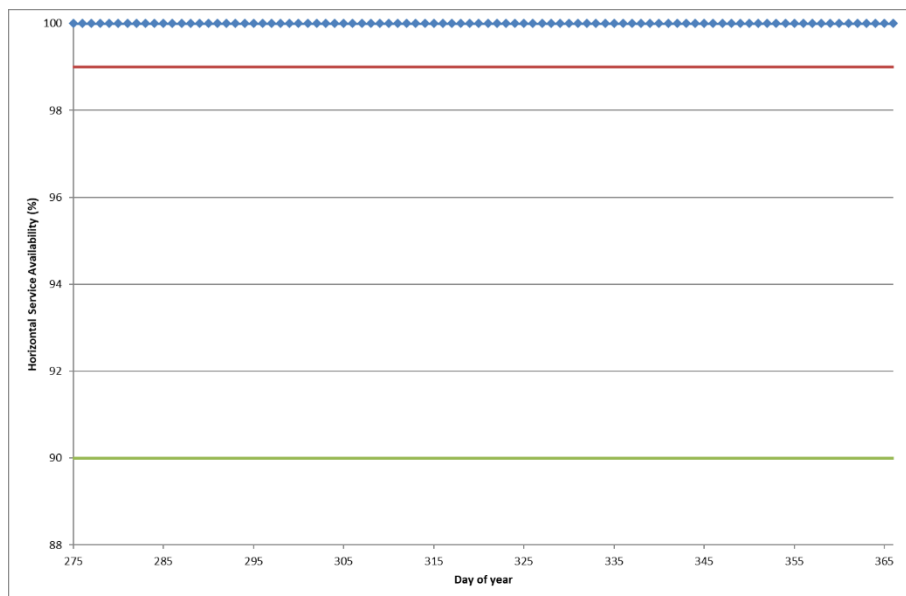


Figure 3-5: Daily Horizontal Service Availability Values for Reporting Period

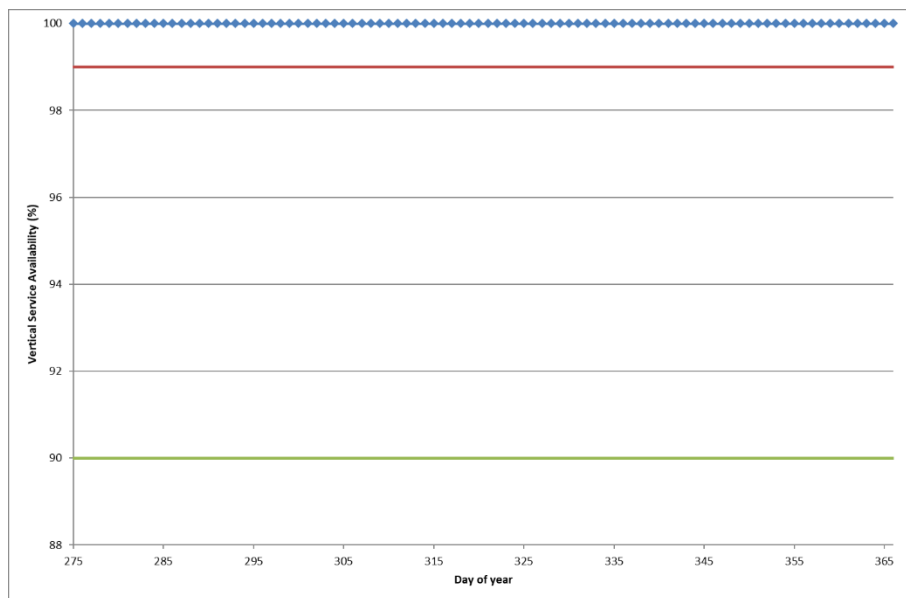


Figure 3-6: Daily Vertical Service Availability Values for Reporting Period

These plots show the horizontal and vertical availability are well above the thresholds of 99% (global average) and 90% (worst site) for the reporting period. Therefore, the position service availability fulfils the requirements.

3.8 Positioning Accuracy

In addition to the specifications in Table 2-1, the Conditions and Constraints for Positioning Accuracy performance [RD.1] are:

- Defined for position solution meeting the representative user conditions;
- Standard based on a measurement interval of 24 hours averaged over all points within the service volume.

For this monitoring activity it should be noted that the position accuracy is assessed through analysis of real data at a single point, rather than through service volume analysis.

The daily horizontal and vertical accuracy values (95%) for the period October to December 2020 are shown in the following figures.

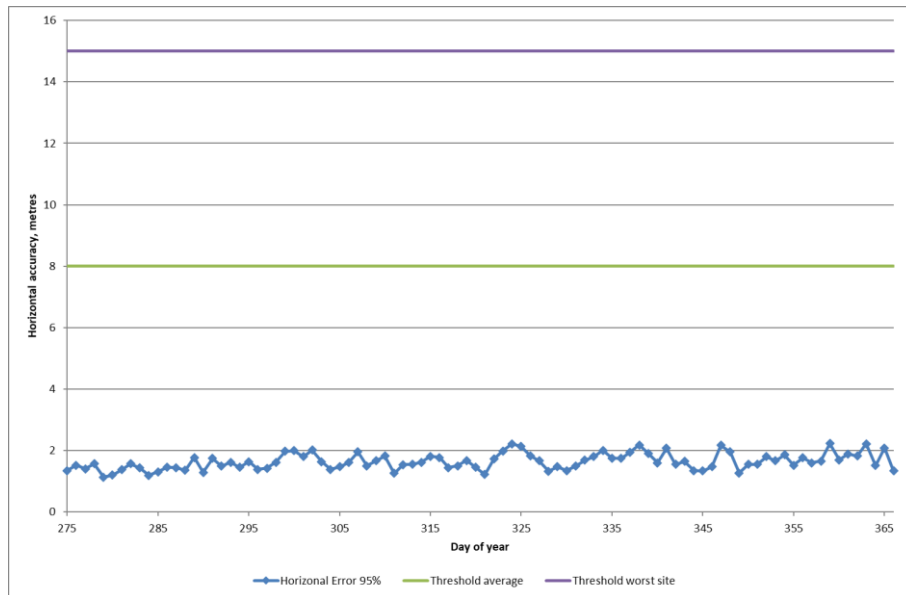


Figure 3-7: Daily Horizontal Position Accuracy (95%) for Reporting Period

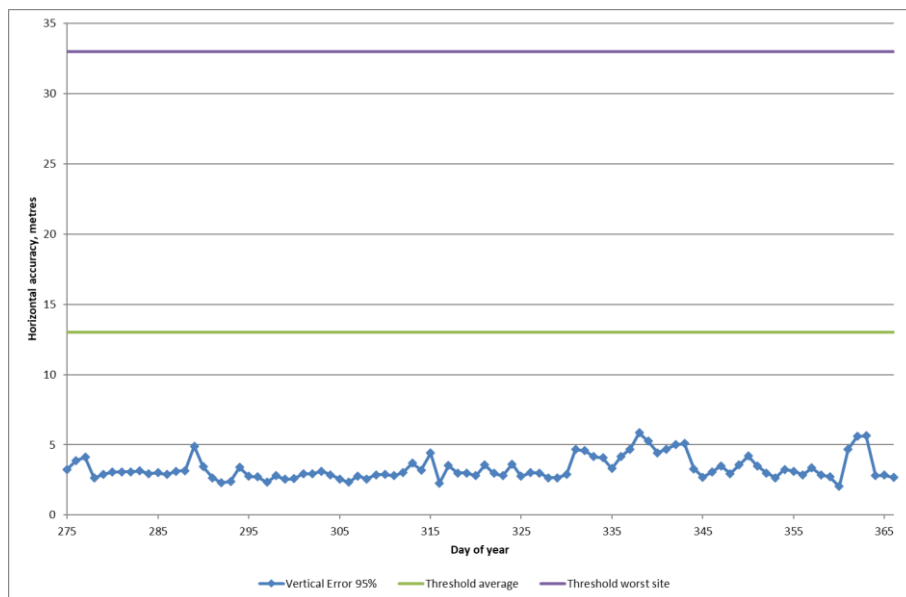


Figure 3-8: Daily Vertical Position Accuracy (95%) for Reporting Period

It can be seen that the daily horizontal accuracy values are all below the thresholds of 8m (global average) and 15m (worst site).

Also, the daily vertical accuracy values are well below the thresholds of 13m (global average) and 33m (worst site).

In addition, the daily position accuracy values at the 99.99% level are shown for the same period.

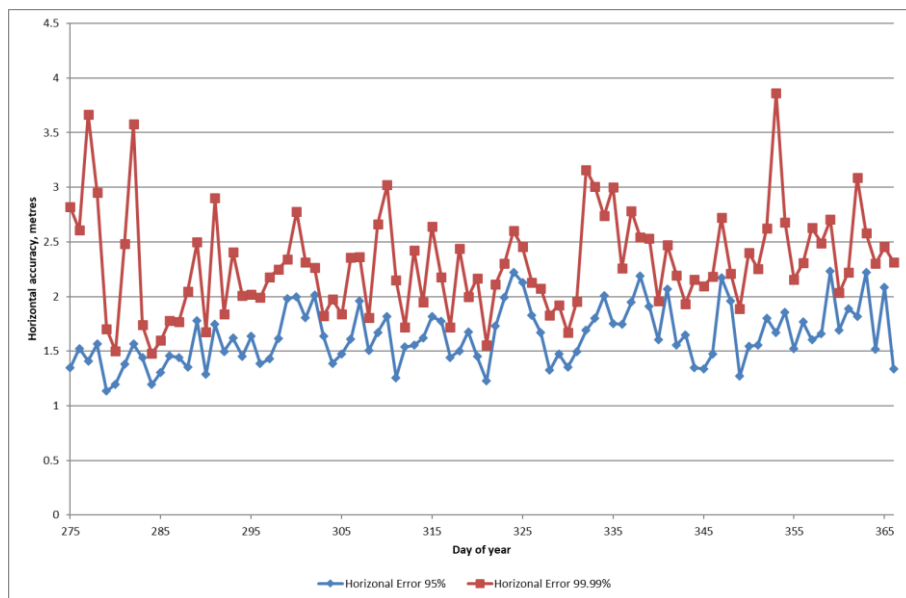


Figure 3-9: Daily Horizontal Position Accuracy (99.99%) for Reporting Period

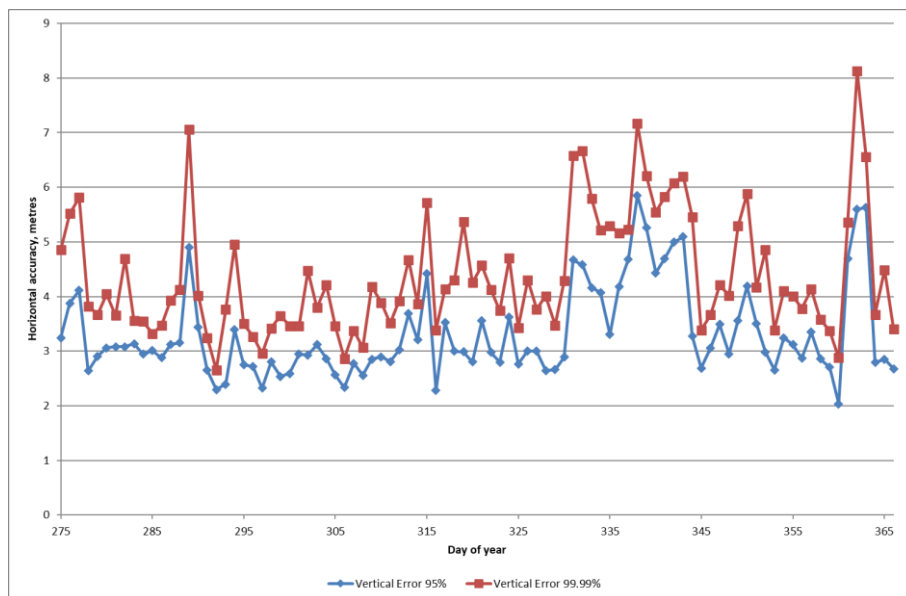


Figure 3-10: Daily Vertical Position Accuracy (99.99%) for Reporting Period

It can be seen that generally the 99.99% values generally follow the same pattern as the 95% values and are not significantly larger.

4 NANU ANALYSIS

NANU information is downloaded from the US Coast Guard Navigation Centre website (<http://www.navcen.uscg.gov/?pageName=gpsNanuInfo>). Summaries of the forecast and actual outages for scheduled and unscheduled events are given below. NANUs that affect the baseline constellation are highlighted in green. NANUs that affect one satellite of an expanded slot in the baseline constellation are highlighted in blue, tan or purple.

NANU	PRN	Type	Start day	Start Time	Stop day	Stop time	Outage (hours)	Ref
2020045	25	FCSTMX	275	1900	277	1900	48	B2
2020047	19	FCSTDV	282	830	282	2030	12	C5
2020048	11	FCSTUJFN	281	1500	NA	NA	NA	D5
2020052	1	FCSTMX	290	1130	290	2330	12	D2
2020053	2	FCSTDV	296	1300	297	100	12	D1
2020054	30	FCSTMX	294	1200	295	0	12	A3
2020061	24	FCSTRESCD	301	1400	302	200	12	2020057
2020059	27	FCSTMX	302	1200	303	0	12	C2
2020060	17	FCSTDV	303	2215	304	1015	12	C4
2020064	6	FCSTMX	307	1200	308	0	12	D4
2020065	9	FCSTMX	309	1240	310	40	12	F3
2020069	30	FCSTDV	318	15	318	1215	12	A3
2020070	3	FCSTMX	314	1545	315	345	12	E1
2020071	32	FCSTMX	315	1200	316	0	12	F1
2020072	11	FCSTUJFN	315	1500	NA	NA	NA	D5
2020076	26	FCSTMX	321	1930	322	730	12	B5
2020079	21	FCSTDV	323	645	323	1845	12	D6
2020080	8	FCSTMX	325	1230	326	30	12	C3
2020083	10	FCSTMX	328	1800	329	600	12	E2

Table 4-1: Summary of Forecast Scheduled Outages

NANU	PRN	Type	Start day	Start Time	Stop day	Stop time	Outage (hours)	Ref
2020049	25	FCSTSUMM	275	1916	276	2335	28.31666667	2020045
2020051	19	FCSTSUMM	282	847	282	1458	6.1833	2020047
2020055	1	FCSTSUMM	290	1219	290	1649	4.5000	2020052
2020058	2	FCSTSUMM	296	1312	296	2027	7.2500	2020053
2020056	30	FCSTSUMM	294	1233	294	1654	4.3500	2020054
2020062	24	FCSTSUMM	301	1437	301	1926	4.816666667	2020061
2020063	27	FCSTSUMM	302	1236	302	1713	4.616666667	2020059
2020066	17	FCSTSUMM	303	2240	304	438	5.966666667	2020060
2020067	6	FCSTSUMM	307	1255	307	1625	3.5	2020064
2020068	9	FCSTSUMM	309	1303	309	1641	3.633333333	2020065
2020078	30	FCSTSUMM	318	22	318	524	5.033333333	2020069
2020070	3	FCSTSUMM	314	1639	314	1939	3	2020070
2020071	32	FCSTSUMM	315	1213	315	1538	3.416666667	2020071
2020075	11	DECOM	315	1514	315	2200	6.766666667	2020072

NANU	PRN	Type	Start day	Start Time	Stop day	Stop time	Outage (hours)	Ref
2020081	26	FCSTSUMM	321	2038	322	25	3.783333333	2020076
2020082	21	FCSTSUMM	323	716	323	1449	7.55	2020079
2020084	8	FCSTSUMM	325	1245	325	1549	3.066666667	2020080
2020085	10	FCSTSUMM	328	2008	328	2311	3.05	2020083

Table 4-2: Summary of Actual Scheduled Outages

NANU	PRN	Type	Start day	Start Time	Stop day	Stop time	Ref
2020050	11	FCSTCANC	279	1915	NA	NA	2020048

Table 4-3: Summary of Cancelled Outages

NANU	PRN	Type	Start day	Start Time	Stop day	Stop time	Outage (hours)	Ref
2020087	7	UNUSUFN	358	325	NA	NA	NA	A4
2020090	7	UNUSABLE	358	325	360	1615	60.83333333	2020087

Table 4-4: Summary of Forecast and Actual Unscheduled Outages

The constellation availability and continuity figures for the baseline constellation, and for all satellites, based on the NANU information are shown in the following table. Note that for continuity and availability, the baseline constellation is not affected if at least one of the satellites in an expanded slot is healthy, i.e. an outage on one of the satellites in an expanded slot does not affect the statistics for the baseline constellation.

	Q4 2020
Hrs	2208
total forecast downtime (all)	240.00
total forecast downtime (baseline)	192.00
total actual scheduled downtime (all)	108.80
total actual scheduled downtime (baseline)	80.02
Scheduled satellite outage events (all)	18
Scheduled satellite outage events (baseline)	13
Unscheduled satellite outage events (all)	1
Unscheduled satellite outage events (baseline)	1
Total actual unscheduled downtime (all)	60.83
Total actual unscheduled downtime (baseline)	60.83
Total actual downtime (all)	169.63
Total actual downtime (baseline)	140.85
Availability (all)	99.752
Availability (baseline)	99.734
Continuity (baseline)	99.885

Table 4-5: Summary of NANU Statistics for Monitoring Period

It is interesting to note that since SVN46/PRN11 was decommissioned on day 315 (10 November), there has been a missing satellite from the D2 expandable slot as this was in the D2F slot. There is still a satellite (PRN01) in the D2A slot so for now the baseline constellation is not affected, but it is expected that a new satellite will be added to the D2F slot. It is noted however that the latest GPS III satellites (SVN76/PRN13 and SVN77/PRN14) are not shown in the navcen information but one of these may be allocated to the D2F slot at some point.

5 CONCLUSIONS

The following table summarises the measured performance against the specification.

Criteria	Specifications	Measured Performance	Passed
SPS SIS Accuracy	The User Range Error (URE) ≤ 7 m 95% for any satellite	Each SV < 7m	Yes.
	The User Range Error (URE) ≤ 2 m 95% for all satellites	<2m	No
SPS SIS rms	≤ 3.6 m	All days <3.6m	Yes.
SPS SIS Integrity	The SIS Integrity $\leq 1 \times 10^{-5}$ Probability Over Any Hour (<0.7 events per quarter)	No SIS events	Yes
SPS SIS Continuity	≥ 0.9998 Probability Over Any Hour	98.885% (one unscheduled outage)	No
SPS SIS Availability	SPS SIS Per-Slot Availability <ul style="list-style-type: none"> ≥ 0.957 SPS SIS Constellation Availability <ul style="list-style-type: none"> ≥ 0.98 Probability that at least 21 Slots out of the 24 Slots will be healthy ≥ 0.99999 Probability that at least 20 Slots out of the 24 Slots will be healthy ≥ 0.95 Probability that the Constellation will have at least 24 Operational Satellites 	1) 99.9% per-Slot Availability 2) 100% Constellation Availability 3) 100% probability that the number of operational satellite is larger than 24.	Yes
PDOP Availability	<ul style="list-style-type: none"> $\geq 98\%$ global PDOP of 6 or less $\geq 88\%$ worst site PDOP of 6 or less 	>99.8% availability on all days	Yes

Criteria	Specifications	Measured Performance	Passed
SPS Position Service Availability	<ul style="list-style-type: none"> • $\geq 99\%$ Horizontal Service Availability average location • $\geq 90\%$ Horizontal Service Availability worst-case location • $\geq 99\%$ Vertical Service Availability average location • $\geq 90\%$ Vertical Service Availability worst-case location 	100% availability on all days	Yes
Positioning Accuracy	<ul style="list-style-type: none"> • ≤ 8 meters 95% All-in-View Global Average Horizontal Error (SIS Only) • ≤ 15 meters 95% All-in-View worst site Horizontal Error (SIS Only) • ≤ 13 meters 95% All-in-View Global Average Vertical Error (SIS Only) • ≤ 33 meters 95% All-in-View worst site Vertical Error (SIS Only) 	1) <3 metres 95% Horizontal Error at the site, 2) <6 metres 95% Vertical Error at the site	Yes

Table 5-1: Summary of Performance

From the table it can be seen that the measured performance is within the required values for almost all requirements. The exceptions are SIS continuity and the new requirement of URE for all satellites combined being less than 2m.

End of Document