



**IRELAND**  
IRISH AVIATION AUTHORITY  
THE TIMES BUILDING  
11-12 D'OLIER STREET  
DUBLIN 2

**FLIGHT  
RESTRICTION  
NOTICE**

---

**Flight Restriction in the vicinity of the Wicklow Mountains, County Wicklow  
from Monday October 20<sup>th</sup> to Friday October 24<sup>th</sup>, 2025.**

---

The Irish Aviation Authority in pursuance of Article 7 paragraphs 3 and 7, and Article 10 of the Irish Aviation Authority (Standardised Rules of the Air) Order, 2019 (S.I. No. 266 of 2019), and in accordance with Commission Implementing Regulation (EU) No. 923/2012, SERA.3145 (Prohibited areas and Restricted areas), hereby directs as follows:-

A temporary restriction on the flying of aircraft, rockets as defined in S.I. No. 25 of 2023, including Unmanned Aircraft Systems (UAS) as defined in S.I. No. 24 of 2023 and Commission Implementing Regulation (EU) 2019/947, shall apply within the following volume of airspace:

**Lateral limits:** The airspace contained within:  
53° 12' 00" N, 006° 23' 56" W  
53° 10' 12" N, 006° 14' 20" W  
53° 03' 00" N, 006° 14' 24" W  
53° 03' 00" N, 006° 37' 12" W  
53° 11' 24" N, 006° 32' 24" W  
53° 12' 00" N, 006° 23' 56" W

**Vertical limits:** SFC to 4000FT AMSL

**Duration:** The period of the restriction shall be from 0800hrs UTC to 1600hrs UTC daily from Monday October 20<sup>th</sup> to Friday October 24<sup>th</sup>, 2025.

The purpose of the TRA is to ensure the safety of aircraft operating within and of other air traffic operating in the vicinity of the Wicklow Mountains, County Wicklow in the period cited whilst allowing for low-level Military flight training.

The airspace contained within the TRA shall be classified as ICAO Class G.

Point of contact during activation: Military ATC Supervisor +353 87 4325791 or +353 1 4037681.

Subject to any decision by the Irish Aviation Authority to the contrary, the airspace within the TRA is restricted to use by aircraft authorised by the Permanent Defence Forces.

Any exemptions, alleviations, or permissions granted to Civil General Air Traffic or Unmanned Aircraft Systems (UAS) operators by the Authority, are not valid within this TRA during the period cited.

Pursuant to Article 13 of S.I. 24 of 2023, where there is a suspected breach of the EASA Regulations, or the Order (S.I. 24 of 2023), a member of An Garda Síochána may, in accordance with Section 7 of the Criminal Justice Act 2006, detain a UAS.

Pursuant to Article 22 of S.I. No. 24 of 2023, if it appears to a member of An Garda Síochána, that a Unmanned Aircraft Systems is likely to be operated in contravention of the EASA Regulation, the IAA Act 1993, the Order (S.I. No. 24 of 2023), or any Directions thereunder, or if a member of An Garda Síochána reasonably suspects the Unmanned Aircraft Systems is being, or is intended to be operated in the commission of any offence, they may direct the operator or remote pilot, not to operate the Unmanned Aircraft Systems.

State aircraft, aircraft of the Irish Coastguard Service and HEMS Aircraft Operators employed on an operational mission shall be exempt from the restriction.

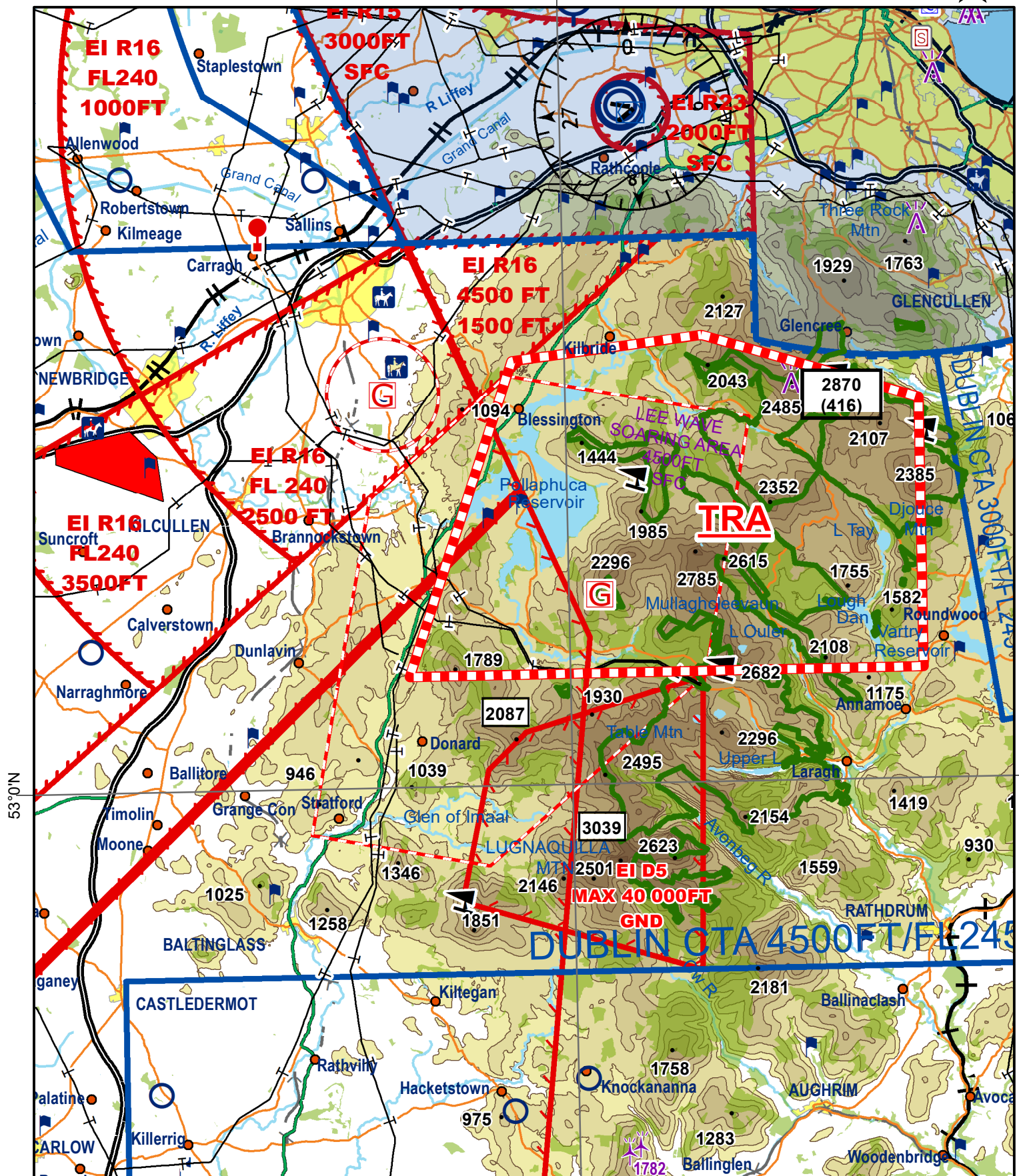
A NOTAM will be issued in due course to notify of the TRA activation.

Any queries may be addressed to the Flight Operations Department of the Irish Aviation Authority by email at [fod@iaa.ie](mailto:fod@iaa.ie).

# Temporary Restricted Area - In the vicinity of Wicklow Mountains, Wicklow from Monday October 20th to Friday October 24th, 2025

6°30'W

N



NB: THIS CHART IS FOR INFORMATION PURPOSES ONLY, IT SHALL NOT BE USED FOR NAVIGATION.

TRA - In the vicinity of Wicklow Mountains, Wicklow

Lateral Limits: 53° 12' 00" N, 006° 23' 56" W

53° 10' 12" N, 006° 14' 20" W

53° 03' 00" N, 006° 14' 24" W

53° 03' 00" N, 006° 37' 12" W

53° 11' 24" N, 006° 32' 24" W

53° 12' 00" N, 006° 23' 56" W

Duration:

0800hrs UTC to 1600hrs UTC daily  
from Monday October 20th to  
Friday October 24th, 2025

SCALE 1:250,000

Vertical Limits: Surface to 4000FT AMSL

CYAL50313031 © Ordnance Survey Ireland/Government of Ireland

## LEGEND

- TRA
- Control Zones
- Control Areas
- Danger Areas
- RESTRICTED AREA
- PROHIBITED AREA

0 3 6  
Nautical Miles