

IRELAND

AERONAUTICAL INFORMATION SERVICES
IRISH AVIATION AUTHORITY
CONTROL TOWER
SHANNON AIRPORT
CO. CLARE

**DRAFT
FLIGHT
RESTRICTION
NOTICE**

Tel +353 61 703750 Fax +353 061 471965 AFTN EINNYYX

FLIGHT RESTRICTIONS

Phoenix Park, Dublin City extending to parts of County Kildare and County Meath 10th to 12th May 2017

1. The Minister of Transport acceding to a request from The Department of Justice and Equality for reasons related to security, has directed the Irish Aviation Authority to give effect by means of an airspace Direction to any requests made (by The Department of Justice and Equality) in relation to the establishment of temporary prohibitions and/or restrictions in areas of Irish airspace associated with the visit of HRH Prince of Wales and HRH Duchess of Cornwall which will take place on the 10th, 11th and 12th of May 2017.
2. Following receipt of such request, the IAA has issued a Direction to establish an area of temporary restricted airspace (TRA) within which flight restrictions shall apply as detailed hereunder.

3. **Temporary Restricted Area (TRA)**

A restriction (temporary restricted area) on the flying of aircraft, including small unmanned aircraft as defined in S.I. No. 563 of 2015, shall apply in airspace over the Phoenix Park, Dublin City and extending to parts of County Meath and County Kildare within the under mentioned:

Lateral limits:

53°23'47N 006°31'17W
53°22'22N 006°20'00W
Arc Radius 1NM centered on 53°21'34N 006°18'59W
53°19'59N 006°21'30W
53°20'35N 006°18'40W

Vertical limits: Surface to 5000 feet AMSL

Duration: 1300 hrs. UTC on the 10th May until 1100 hrs. UTC on the 12th May 2017 inclusive (See chart page 3).

4. **ATS Units**

Airspace within the TRAs so established, is restricted to use by flights outlined and in accordance with the restrictions at point 5, hereunder or as specifically authorised by the controlling officer, Security and Northern Ireland Division of the Department of Justice and Equality and under the control of Dublin Terminal Air Traffic Services;

5. **Flight Restrictions**

- 5.1 **Flights permitted.**

- 5.1.1 State, Search and Rescue (SAR operational) and emergency air ambulance aircraft which are **transiting, departing or landing** within the TRA and who are in receipt of an Air Traffic Service from Dublin Terminal Air Traffic Services;
- 5.1.2 Commercial IFR aircraft who are in receipt of an Air Traffic Service;
- 5.1.3 Any aircraft specifically authorised by the controlling officer, Security and Northern Ireland Division of the Department of Justice and Equality.

5.2. Other Flights than those listed at 5.1.

- 5.2.1 All other aircraft or flights are **not permitted**. For information contact the Flight Operations Department of the IAA as per paragraph 6 below.
- 5.2.2 Any exemptions, alleviations or permissions, granted to civil general air traffic by the Authority, including locations where model aircraft flying has been notified, are not valid within this TRA during the periods cited.

Note - For this information notice, 'other flights' are defined as all aircraft or flight operations, including aerial work, which are not detailed at 5.1 and include the following categories of flight;

- Ballooning;
- Gyroplanes;
- Model Aircraft;
- Para-glider;
- Hang-glider;
- Foot Launched Powered Parachuting;
- Aerobatic manoeuvres;
- Gliders;
- Aerial Work flights including, but not exclusive to, banner towing, filming, photography, dropping of articles, aerial application and aerial survey; and
- Operation of Unmanned Aerial Systems (RPAS).
- Micro-light aircraft;
- Flight Training;
- Parachute Dropping
- **Small unmanned aircraft (model aircraft and drones).**

6. Queries

Any queries may be addressed to the Flight Operations Department of the IAA by email at fod@iaa.ie or telephone +35316031117 / 1148 / 1410) between the hours of 0900hrs and 1700hrs local Monday to Friday.

Warning

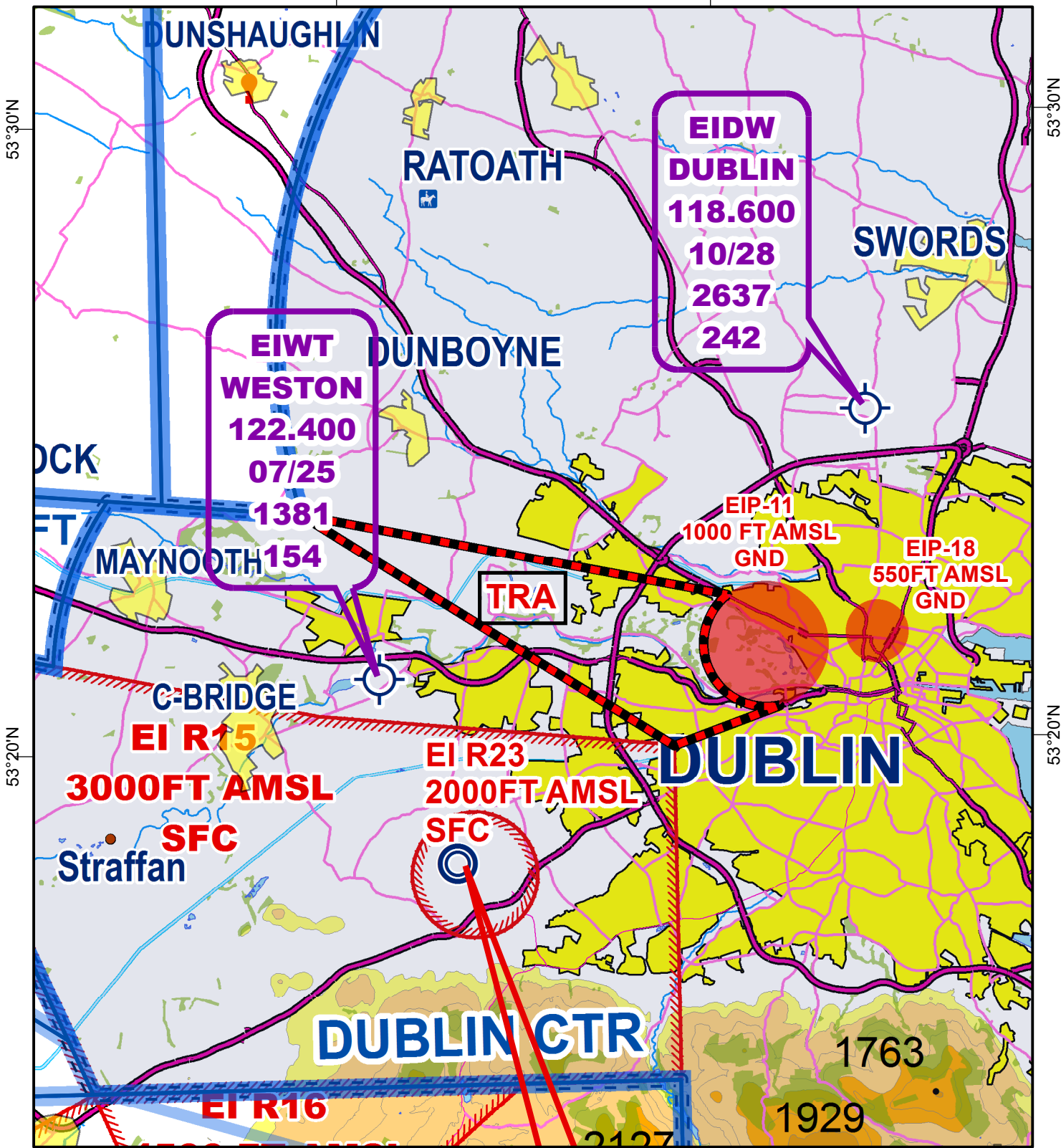
All aircraft flying within the confines of the TRAs in contravention of the flight restrictions may be subject to interception or interdiction by the Permanent Defence Forces.

Chart for illustrative purposes only

TEMPORARY RESTRICTED AREA: PHOENIX PARK, DUBLIN CITY, INCLUDING PARTS OF CO.'S KILDARE AND MEATH MAY 10TH - MAY 12TH 2017 INCLUSIVE

6°30'W

6°20'W









Lateral Limits:
 53° 23' 47" N, 006° 31' 17" W
 53° 22' 22" N, 006° 20' 00" W
 Arc Radius 1NM centered on 53° 21' 34" N, 006° 18' 59" W
 53° 19' 59" N, 006° 21' 30" W
 53° 20' 35" N, 006° 18' 40" W

Vertical Limits: SFC to 5000FT AMSL

Duration: 1300 UTC May 10th to 1100 UTC May 12th inclusive 2017

LEGEND

	DUBLIN TRA		MILITARY AERODROME
	PROHIBITED AREA		CIVIL AERODROME
	RESTRICTED AREA		CONTROL ZONE

Nautical Miles
 0 1 2 4 6