



# IRELAND

AERONAUTICAL INFORMATION SERVICES  
IRISH AVIATION AUTHORITY  
CONTROL TOWER  
SHANNON AIRPORT  
CO. CLARE

**TEMPORARY  
RESTRICTED  
AREA  
NOTICE**

Tel +353 61 703750 Fax +353 061 471965 AFTN EINNYYX

---

**Air Navigation Restriction in the vicinity of the Nephin Beg Range area  
County Mayo from 1000 UTC 03<sup>rd</sup> October 2016 to 1300 UTC 06<sup>th</sup> October 2016**

A restriction (Temporary Restricted Area) on the flying of aircraft shall apply in the vicinity of the Nephin Beg Range Area in the Airspace contained within the under mentioned which is situated within the Shannon FIR:

**Lateral limits (TRA 2):**

- (1) 54° 05' 27.0032" N 009° 39' 04.6890" W
- (2) 54° 05' 33.5132" N 009° 30' 49.7285" W
- (3) 53° 58' 00.8792" N 009° 30' 33.1410" W
- (4) 53° 57' 54.3992" N 009° 38' 46.7940" W

**Vertical limits:** SFC to 3500 feet AMSL

**Duration:** The period of the restriction shall be from 1000 UTC 03<sup>rd</sup> October 2016 to 1300 UTC 06<sup>th</sup> October 2016

The purpose of the TRA is to ensure the safety of aircraft by separating civil operations from the Military RPAS (Remotely Piloted Air Systems) exercise area in the Nephin Beg Range region and of other aircraft operating within the vicinity of Nephin Beg range in the cited period.

The Airspace in the TRA is restricted to use by aircraft authorised by the Flight Operations Department of the Irish Aviation Authority, and in accordance with the Joining Instructions issued by that unit.

Remotely Piloted Air Systems e.g. drones, operating privately or under Aerial Works Permission may not operate within the TRA without written Permission from the Flight Operations Authority and Event Organisers. RPAS may be subject to seizure by An Garda Síochána as evidence for potential prosecution and in the interest of Aviation Safety.

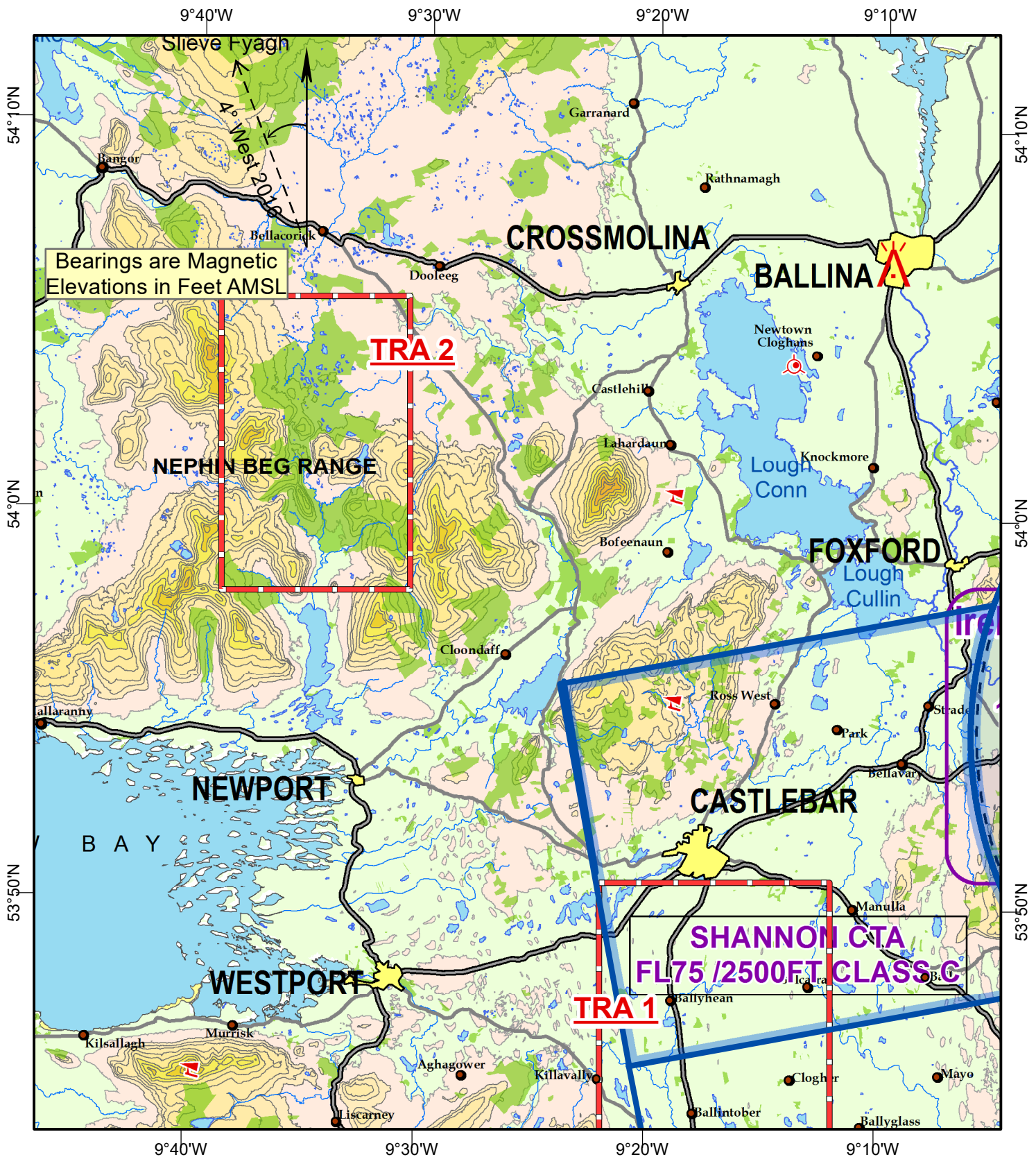
State Aircraft and Aircraft of the Irish Coastguard Service employed on an operational mission shall be exempt from the restriction.

Any exemptions, alleviations or permissions, granted to Civil General Air Traffic by the Authority, are not valid within this Temporary Restricted Area during the period cited.

A NOTAM will be issued in due course by the AIS office to notify of the TRA activation.

Any queries may be addressed to the Flight Operations Department of the IAA by email at [fod@iaa.ie](mailto:fod@iaa.ie) or telephone +353 1 6031117 / 1148 / 1410) between the hours of 0900hrs and 1700hrs local Monday to Friday.

# Military RPAS Exercise -Nephin Beg Range Area 03rd to the 06th October 2016



## Temporary Restricted Area (TRA 2)

Lateral Limits:- 54° 05' 27.0032" N 009° 39' 04.6890" W  
 54° 05' 33.5132" N 009° 30' 49.7285" W  
 53° 58' 00.8792" N 009° 30' 33.1410" W  
 53° 57' 54.3992" N 009° 38' 46.7940" W

Vertical Limits:- SFC to 3500FT

Duration:- 1000 UTC on Monday 03rd to 1300 UTC on Thursday 06th October 2016

Mapping based on Ordnance Survey Ireland by permission of the Government © Government of Ireland Permit Number 7109

## Legend

## SCALE

1:250,000  
Nautical Miles

